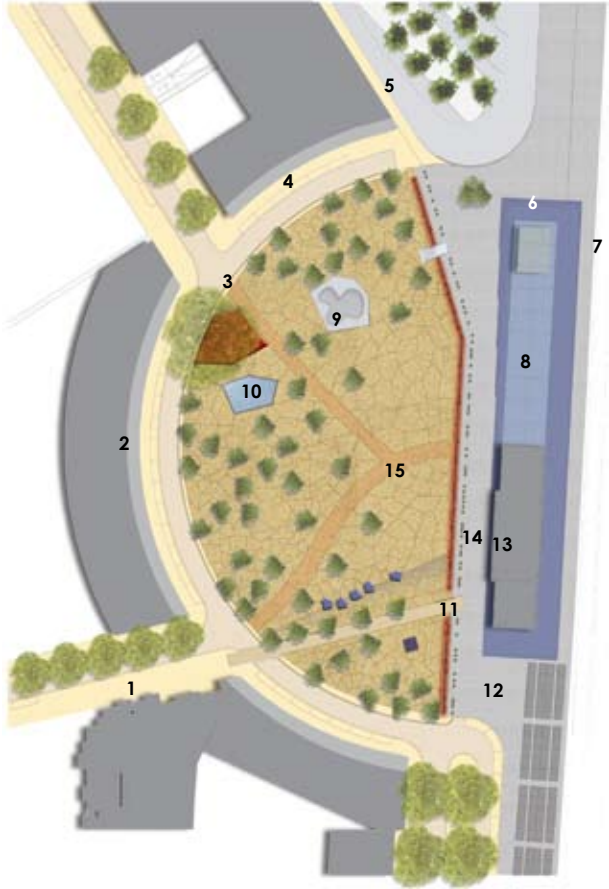


荷兰阿帕多恩车站站前广场

Location: Apeldoorn, The Netherlands **Designer:** LODEWIJK BALJON landscape architects **Photographer:** Rik Klein Grotink, Lodewijk Baljon, Daniel Nicolas **Completion date:** 2009 **Site area:** 10,000sqm

项目地点：荷兰，阿帕多恩 设计师：路德维克·贝隆景观设计事务所 摄影师：瑞克·克莱因·格勒丁克，丹尼尔·尼古拉斯，路德维克·贝隆 完成时间：2009年 占地面积：10,000平方米



- | | | | |
|-----------------------------|---------------------------------|------------------|---------------|
| 1. Road to Inner City | 12. Taxi / Drop-off | 1. 通往市中心的道路 | 11. “? ” |
| 2. Crescent Housing + Shops | 13. Historical Station Building | 2. 呈月牙形排列的住宅楼和商铺 | 12. 出租车下客区 |
| 3. Platanus | 14. Glass Wall | 3. 悬铃木 | 13. 旧车站建筑 |
| 4. Office | 15. Road to Underpass | 4. 办公楼 | 14. 玻璃墙 |
| 5. Bus Terminal | | 5. 公共汽车终点站 | 15. 通往地下通道的道路 |
| 6. New Pavilion | | 6. 新凉亭 | |
| 7. Tracks | | 7. 交通轨道 | |
| 8. Bike Parking | | 8. 自行车停车场 | |
| 9. Skate Pool | | 9. 滑板池 | |
| 10. Water Table | | 10. 水台 | |
| 11. “Kiss” | | | |



Station Square Apeldoorn, The Netherlands

The public space integrates different modes of transportation (bus terminal, railway station, major bicycle and pedestrian route under passing the tracks, kiss and ride, taxi stand.) At the centre is an underpass for bicycles and pedestrians, both linked with the railway station and platforms. A large bicycle parking is combined with the underpass. The storage is underground but, through the concaved shell shape of the square, at the same time presenting itself with a façade and is well accessible.

The shell-shaped floor radiates calm and exclusive simplicity. Yellow Portuguese granite continues throughout and up until the tree trunks. In the pattern of craquelure-like cracks, line drains, tree grates, and light poles have been effortlessly integrated. The unique tree grates are a culmination of the characteristic paving pattern.

Pine trees were selected from a nursery, as if picked from the regional forest. They stand in a loose arrangement that moves with the Crescent, denser along the edge of the square and giving way to openness towards the centre.

The simple light poles stand loosely spread amongst the stems of the pines. The emphasis is on the spectacle of the glass wall. The 1.3 million LED lights in the glass wall picture a continually changing reference of 'travelling sand' that refers to a sand drift, a phenomenon of the regional landscape.

该公共空间融合了不同形式的交通方式——公共汽车、火车站、自行车、汽车临停接送区及出租车站。广场中间是供自行车和行人使用的地下通道，连接着火车站和月台。该地下通道还连接着大型自行车停车场。虽然停车场位于地下，但是由于该广场呈贝壳状的凹陷形，停车场的侧面显露出来，因而很容易找到。

贝壳状的地面设计呈现出一种独特的简单。黄色的葡萄牙花岗岩铺设在整个地面直至树干。龟裂式的裂缝、线状排水沟、树池保护格栅及灯柱轻松地融合在一起。独特的树池保护格栅是整个地面铺装的亮点所在。

广场种植的松树是从苗圃中挑选而来，按照广场的形状呈新月形状分布。越靠近广场的边缘地带，种植的越密集，从而给广场中心留出更多空间。

简单的灯柱围绕着松树随意的设置。设计的重点在于玻璃墙所形成的壮观景象。玻璃墙内的LED灯呈现出一幅不断变化的“流沙”画面，反映了当地的一种独特景观现象。

Award description:

Dutch Design Award 2009

German Design Prize 2010

奖项描述：
2009荷兰设计奖
2010德国设计奖

Right: The large red metal box protects the roots of the existing plane tree, and also serves as an iconic seating element!

右图：巨大的红色金属盒保护着现存悬铃木的根部，同时也是座椅设施





Upper left: The edge of the square expands to the crescent shaped buildings
Lower left: The station square serves as a link for the two sides of Apeldoorn as well as from the train station to the city
Upper right: Large sitting elements express the characteristic of the craquelure pattern of the floor
Lower right: The craquelure pattern of expansion joints and line drains continues into the tree grates

左上：广场的边缘延伸至呈月牙形排列的建筑物
左下：站前广场连接着阿帕多恩城市的两端，同时也将车站和城市连接起来
右上：巨大的座椅设施与地面的龟裂纹相互映衬
右下：伸缩接头和线性排水沟的龟裂纹延伸至树池保护格栅





Upper left: The granite water table reflecting the sky
Lower left: Local pine trees are reference to the characteristic forest of the region
Upper right: The skate pool is a source of liveliness and diversity in activity of the square
Lower right: The irregular bubble pattern of the granite water table

左上：花岗岩制成的水台反射着天空的光芒
左下：悬铃木的种植与阿帕多恩市的森林遥相呼应
右上：滑板池为广场增添了生机与活力
右下：花岗岩水台不规则的起泡方式

